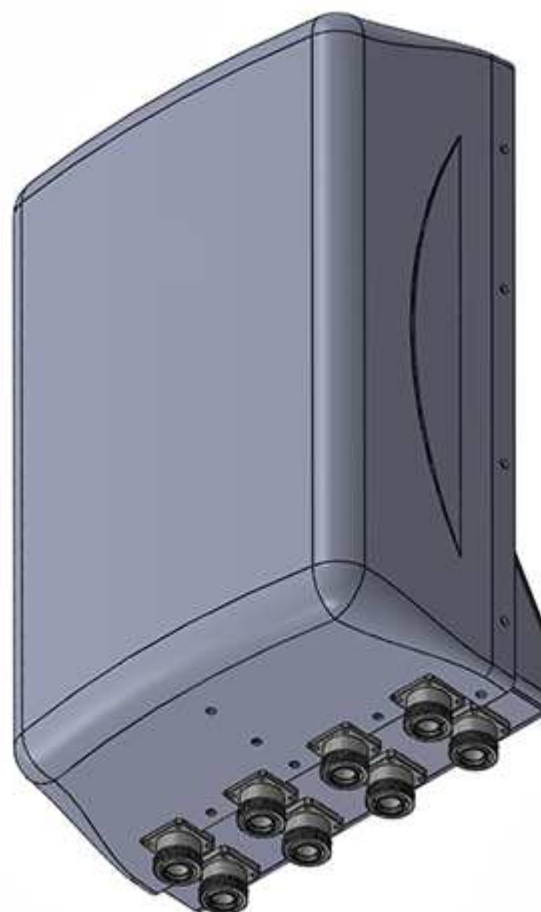


SACP 8x5510

1710 -2180 MHz (8x) CP log-periodic antenna

Features

- ❑ Transmit Diversity Gain
- ❑ Can be configured to combine space & polarization diversity
- ❑ Outstanding performance over the entire band (1710 - 2180 MHz)
- ❑ Excellent Axial Ratio
- ❑ Allows for 2 ea. independent 4 branch receive diversity paths
- ❑ Low intermodulation
- ❑ Improved Side-to-side rejection
- ❑ Fading reduction
- ❑ Excellent isolation between ports



Electrical specifications

Frequency range:	1710-2180 MHz
Impedance:	50 ohm
Connector type:	7/16 Din
Return loss:	18 dB
Polarization:	Circular
Gain ea. port [Circular]:	8x10 dBdC
Gain ea. port [Linear]:	8x7 dBdL
Axial Ratio:	2 dB
Isolation between ports (TX band):	28 dB
Front-to-back ratio:	30 dB
Intermodulation (2x20W):	IM3 153 dB
	IM5 160 dB
	IM7/9 170 dB
Power rating:	8x 150 W
H-plane (-3 dB point):	8x 55°
V-plane (-3 dB point):	8x 35°
Lightning protection:	DC grounded

Mechanical specifications

Overall height:	19.1 in	[485 mm]
Width:	13 in	[330 mm]
Depth:	6.5 in	[165 mm]
Weight (excluding brackets):	18 lbs	[8.1 Kg]
Wind load measured up to:	150 mph	[240 Km/h]
Wind area (front of antenna):	1.72sq. ft.	[0.16 sq.m]
Lateral thrust at 113 mph/ 180 Km/h (worst case):	88 lbs	[392 N]

Materials

Radiating Elements:	Silver plated brass
Transformer (Power distribution)	Ceramic PCB
Chassis:	Aluminum
Radome:	Grey Fiberglass/PVC
Mounting:	

The SACP 8x5510 is made in the U.S.A.