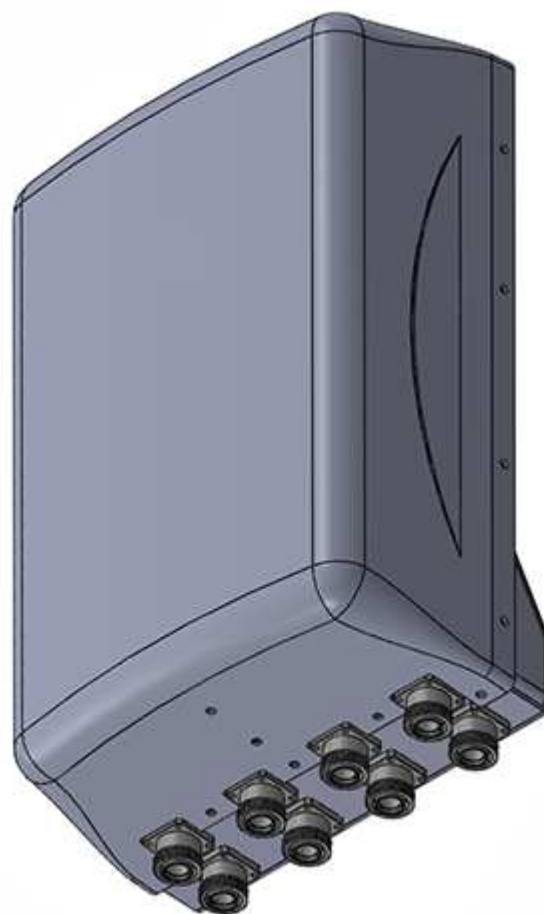


# SAMCP 8x5510

dual band 8 port CP log-periodic antenna

## Features

- ❑ Transmit Diversity Gain
- ❑ Can be configured to combine space & polarization diversity
- ❑ Outstanding performance in all bands (1710 - 2180 & 2300 - 2700 MHz)
- ❑ Excellent Axial Ratio
- ❑ Allows for 2 ea. independent 4 branch receive diversity paths
- ❑ Low intermodulation
- ❑ Improved Side-to-side rejection
- ❑ Fading reduction
- ❑ Excellent isolation between ports



## Electrical specifications

Frequency range:	<b>1710-2180 /2300 - 2700 MHz</b>
Impedance:	<b>50 ohm</b>
Connector type:	<b>7/16 Din</b>
Return loss:	<b>18 dB</b>
Polarization:	<b>Circular</b>
Gain ea. port [Circular]:	<b>8x10 dBdC</b>
Gain ea. port [Linear]:	<b>8x7 dBdL</b>
Axial Ratio:	<b>2 dB</b>
Isolation between ports (TX band):	<b>28 dB</b>
Front-to-back ratio:	<b>30 dB</b>
Intermodulation (2x20W):	<b>IM3 153 dB</b>
	<b>IM5 160 dB</b>
	<b>IM7/9 170 dB</b>
Power rating:	<b>8x 150 W</b>
H-plane (-3 dB point):	<b>8x 55°</b>
V-plane (-3 dB point):	<b>8x 35°</b>
Lightning protection:	<b>DC grounded</b>

## Mechanical specifications

Overall height:	<b>17.9 in</b>	<b>[455 mm]</b>
Width:	<b>12 in</b>	<b>[305 mm]</b>
Depth:	<b>6.5 in</b>	<b>[165 mm]</b>
Weight (excluding brackets):	<b>18 lbs</b>	<b>[8.1 Kg]</b>
Wind load measured up to:	<b>150 mph</b>	<b>[240 Km/h]</b>
Wind area (front of antenna):	<b>1.49 sq. ft.</b>	<b>[0.14 sq.m]</b>
Lateral thrust at 113 mph/ 180 Km/h (worst case):	<b>76 lbs</b>	<b>[339 N]</b>

## Materials

Radiating Elements:	<b>Silver plated brass</b>
Transformer (Power distribution)	<b>Ceramic PCB</b>
Chassis:	<b>Aluminum</b>
Radome:	<b>Grey Fiberglass/PVC</b>
Mounting:	

*The SAMCP 8x5510 is made in the U.S.A.*