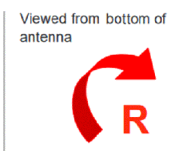
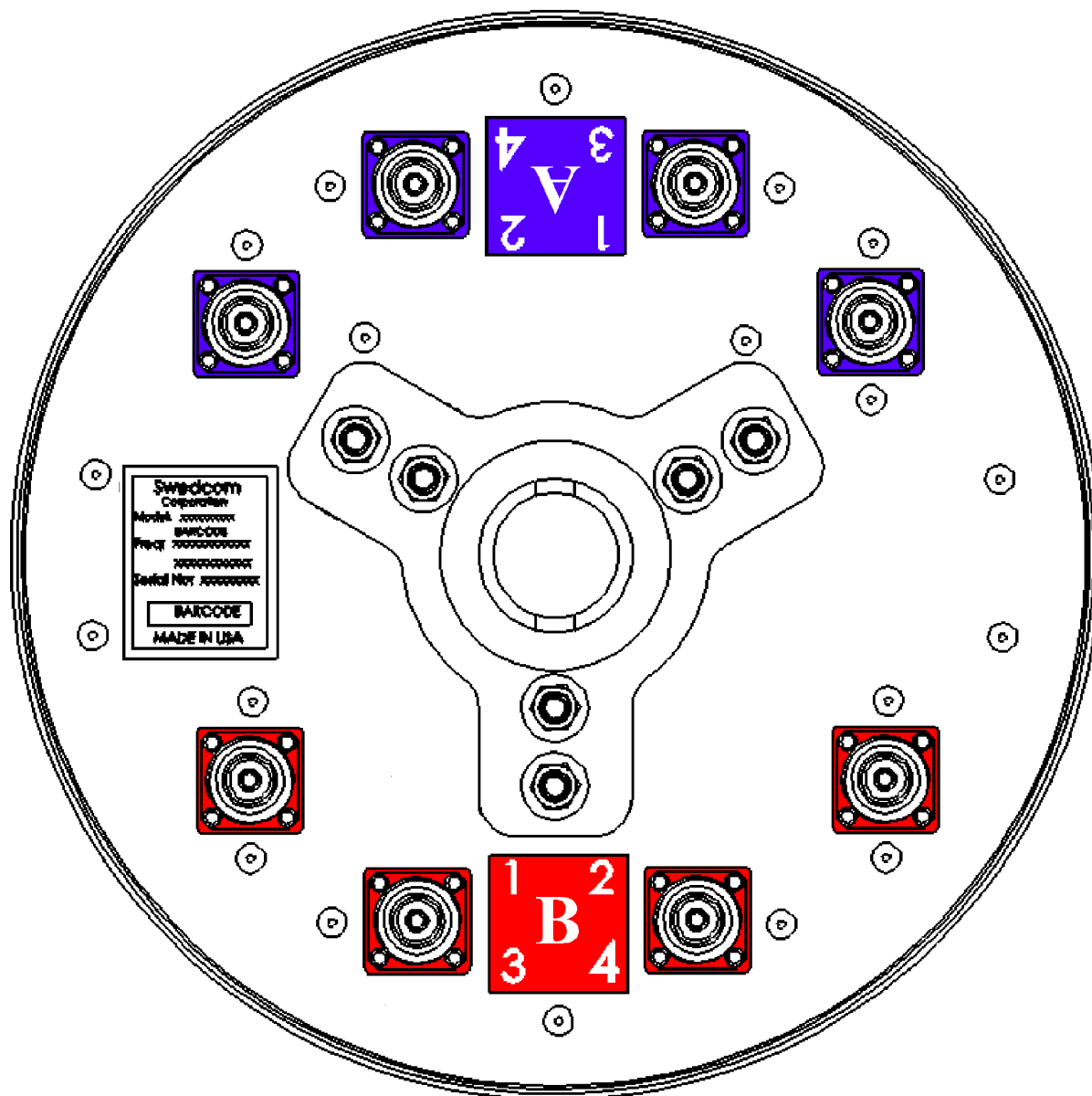
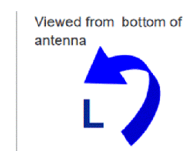




SACPC 8x36010 1710 - 2180 MHz (8x) CP Log-periodic canister antenna



Port 1 & 3 left CP.
Port 2 & 4 right CP.

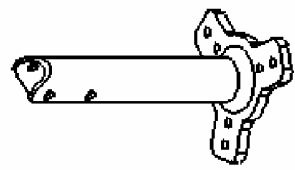
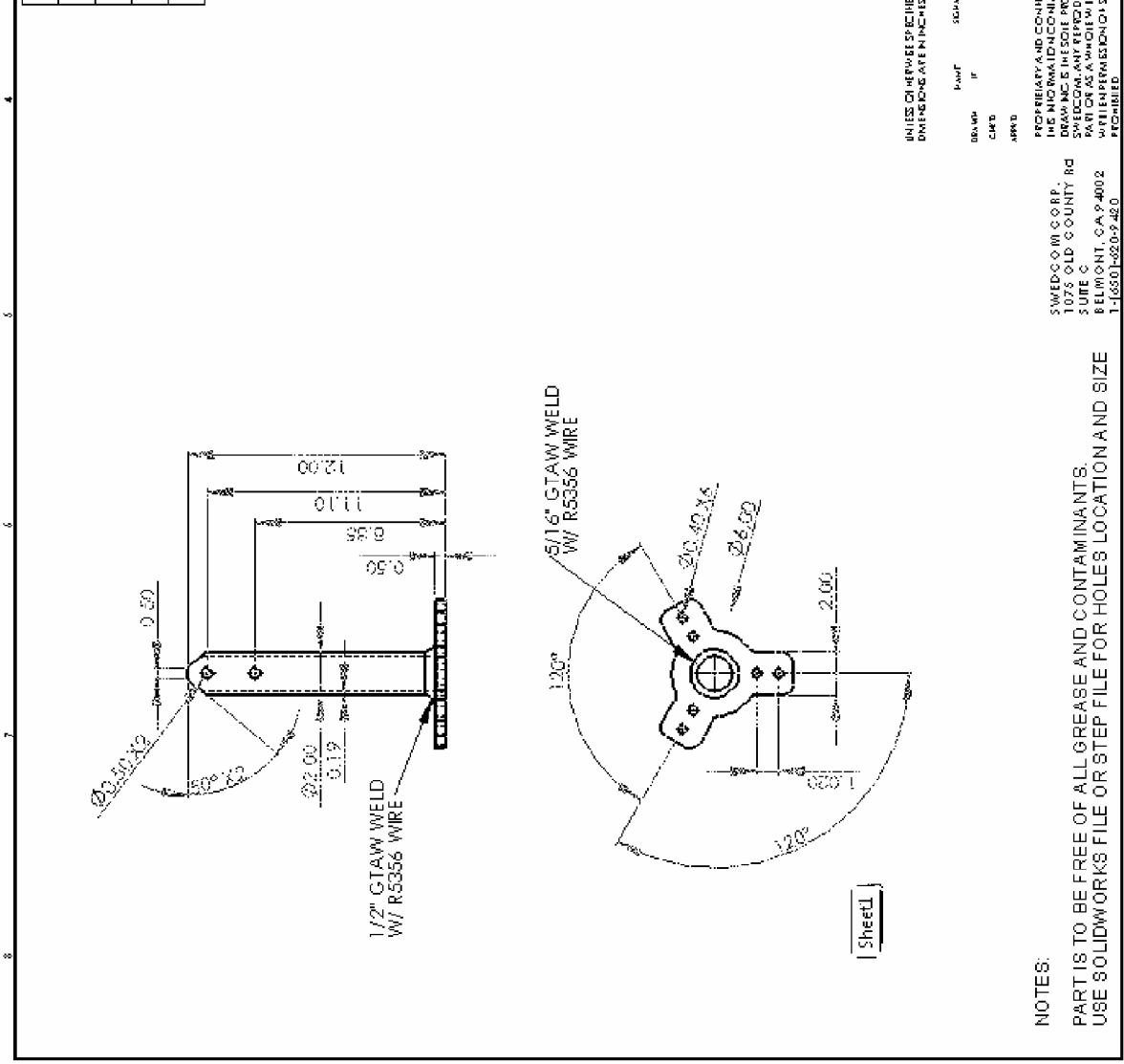


Swedcom Corporation
1075 Old County Road, Suite C
Belmont, CA 94002

Phone: (650) 620-9420
Fax: (650) 620-9281

www.swedcom.com
info@swedcom.com

REVISIONS			
REV.	DESCRIPTION	DATE	INITIAL
XI	INITIAL RELEASE	5/11/17	II
D	CHANGED DIAMETER AND LENGTH	7/11/17	II
I	PRODUCTION	5/29/17	II



UNITS OR DIMENSIONS SPECIFIED: DIMENSIONS ARE IN INCHES FINISH: MILL DO NOT SCALE DRAWING REV PART #

DATE: 5/29/17

DESIGNED BY: J. SCHUBERT

CHECKED BY: J. SCHUBERT

APPROVED BY: J. SCHUBERT

CO. DIMENSIONS: X.XX = .0003" X.XXX = .0002" X.XXXX = .0001" ANGLE DIA. P = .005-.008

PART # TITLE: ANTENNA MOUNTING

DWG NO. LT0863 REV 1

MATERIAL: ALUMINUM

PROPERTY AND CONFIDENTIALITY NOTICE: THIS DRAWING IS THE PROPERTY OF SWEDCO, INC. AND IS NOT TO BE REPRODUCED OR TRANSMITTED IN ANY FORM OR BY ANY MEANS, ELECTRONIC OR MECHANICAL, INCLUDING PHOTOCOPYING, RECORDING, OR BY ANY INFORMATION STORAGE AND RETRIEVAL SYSTEM, WITHOUT THE WRITTEN PERMISSION OF SWEDCO, INC.

SWEDCO, INC. CORP.
1075 OLD COUNTY RD
SUITE C
BELMONT, CA 94002
1-650-220-9420

NOTES:
PART IS TO BE FREE OF ALL GREASE AND CONTAMINANTS.
USE SOLIDWORKS FILE OR STEP FILE FOR HOLES LOCATION AND SIZE

Sheet 1